

**Information for Art Inclusion for the Nursing and Science Building,
Rutgers - The State University of New Jersey, Camden Campus,
Camden, New Jersey
Ceiling Mounted Art**

Rutgers – The State University of New Jersey is soliciting Expressions of Interest (EOI) from prospective artists to design, fabricate and install artwork for the entry lobby and upper atrium of the new Nursing and Science Building at Rutgers University’s Camden Campus, located in Camden, New Jersey. The proposed artwork for the new building is part of the New Jersey Arts Inclusion Program and is coordinated by the New Jersey State Council on the Arts and Rutgers University Planning, Design and Development a department within Institutional Planning and Operations.

Since the passage of the New Jersey Arts Inclusion Act of 1978, the program has led to the commissioning and installation of hundreds of public artworks in state financed construction projects throughout New Jersey. The Act requires that up to 1.5% of the state financed construction budget is set aside for the inclusion of publically accessible art.

Rutgers University Nursing and Science Building Project Description

The Rutgers University is providing a place for its rapidly expanding nursing programs and its undergraduate science departments on its Camden campus. Located on a triangular site on the edge of City Hall Plaza between the Rutgers Camden campus and the Cooper Medical Center, the new state-of-the-art Nurse and Science Building bridges academic programs with clinical training and expands Rutgers’ ability to prepare for a new generation of science and nursing leaders.

To strengthen this connection, the primary interior circulation parallels the city grid and is repeated on all four levels of the building. Along the southwest façade this “student street” provides access to major learning spaces, opportunities for collaboration and socializing, and views overlooking a park. The transparency and modulation of this façade showcase the activity within. In contrast the north and east façades feature masonry in response to the context of the adjacent city buildings.

Within the building there is a variety of learning spaces including lecture halls, case study rooms, interactive classrooms, seminar rooms and group study nodes. The biology and physics labs provide both research and teaching spaces. For the nursing program skills and assessment labs, simulation and standardized patient suites provide optimal teaching spaces for the delivery of health care education.

Places for quiet individual study drive the design and create environments for small groups to collaborate on assignments, and for large gatherings to celebrate accomplishments and share information. A combination of open stairs and two-story volumes reinforces the visual and physical connection within the building. The design reveals the vitality and content of the academic programs and promotes community among the users.

The Interior Design concept begins with the notion of genetics as a bridge between science and nursing – the two departmental occupants in the building. The sequencing of the human genome opened new windows into the understanding of human traits, skills, and disabilities. These and other scientific innovations continue to translate into advancements in medicine and patient care, which, along with clinical simulation, is central to nursing education.

One of the systems used in genetics is DNA barcoding, a standard for fingerprinting a species' genetic code. The genetic sequence can be represented by a series of letters – CATG – representing the nucleic acids – cytosine, adenine, thymine and guanine – or by a series of colored parallel bars with a distinctive graphic appearance. In the case of the Nursing and Science Building, these unique patterns have been translated into architectural ceiling and floor patterns, structural rhythms, fabric textures, lighting and interior chroma.

The Art installation is envisioned as a hanging, lighted or self-illuminated sculptural element in the first floor Entry Lobby and potentially also in the Upper Atrium on the third floor. It is intended to reflect the educational mission of the Rutgers University Nursing and Science Building, and respond to the interior design concept through a novel, thought-provoking and evocative art piece or pieces. Given the location of the installation and its visibility from outside the building both to the north and south, attention should be given to the art's impact at both an intimate and an urban scale.

Potential Location(s) for Arts Inclusion

The location for the art is identified below:

- Primary Art Location - Entry Lobby
- Secondary Art Location – Upper Atrium

Please refer to the attached renderings that illustrate the potential primary and secondary locations for the inclusion of art piece.

The materials selected for the art shall be sustainable and should require minimal maintenance and upkeep. They should also be appropriate for a public setting.

Arts Inclusion Project Budget

The proposed budget for the artwork is **\$200,000.00**. The budget shall cover all costs incurred by the artist relating to the design, fabrication and installation of the art work. Covered expenses include but shall not be limited to compensation for design and engineering services, materials, transportation of artwork, fabrication, installation, etc.

Anticipated Process

Three potential artists will be selected from those who submit expressions of interest. The artists are to prepare a project specific proposal that will be presented, in person, at the Rutgers University campus in Camden, New Jersey to the Nursing and Science Arts Inclusion Selection Committee.

Artists interested in participating in the project shall submit letters summarizing their interest and experience in the creation of public artworks. The letter shall include a list of at least 3 references (name, contact information – phone number and e-mail address) for similar projects. In addition to the letter the artists shall include other pertinent information including their resume, photographs/images (minimum: 4, maximum: 6) of examples of installations of public art, website links, etc. Any materials submitted will not be returned. Please do not provide original documents.

Three (3) artists shall be selected to prepare project specific, in person, presentations to the Selection Committee. The presentations shall take place on the Camden Campus of Rutgers, The State University of New Jersey. Each of the three (3) finalists shall receive a stipend in the amount of \$500.00 to cover costs associated with the preparation of the presentation and travel expenses.

Schedule (tentative)

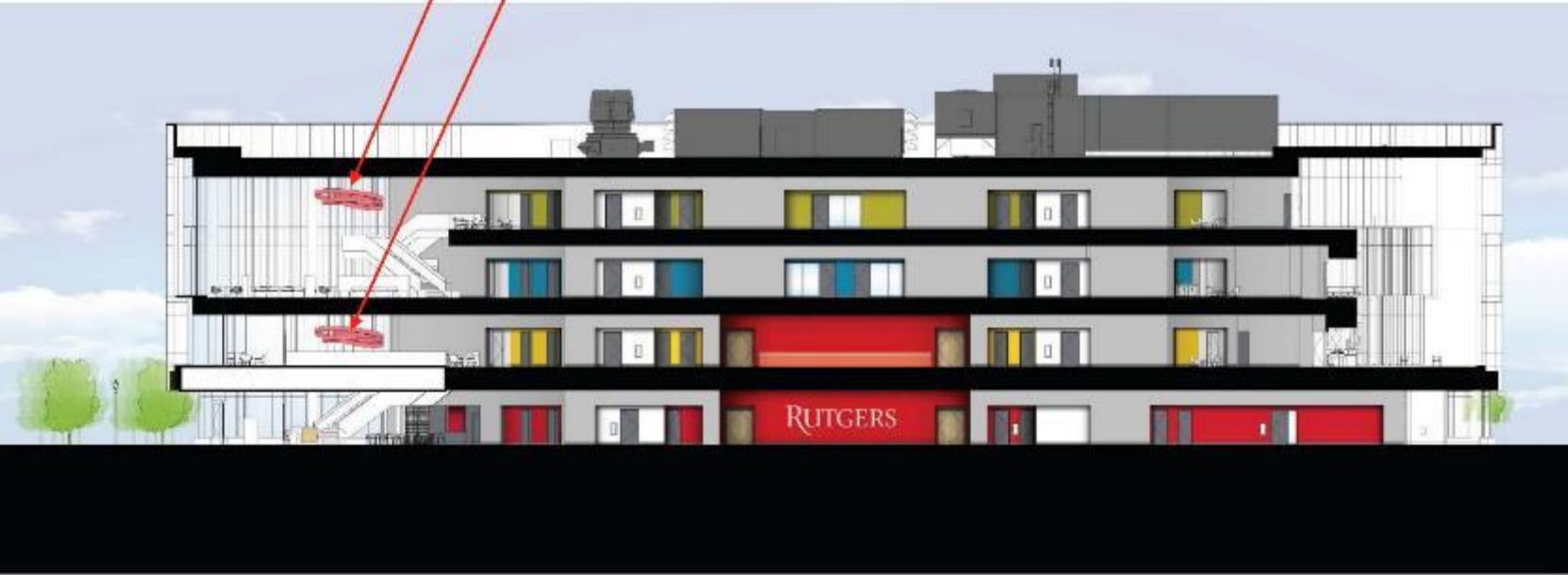
Posting date:	September 1 st , 2017
Closing Deadline:	September 29 th , 2017
Jury/Panel Review Begins:	October 2 nd , 2017
Jury/Panel Review End:	October 6 th , 2017
Notification of Finalists:	Week of October 9 th , 2017 (artists prepare project specific presentations for electronic submission, pdf file no larger than 5mb, no later than 5:00 PM Eastern Time, November 6 th , 2017)
Finalist Presentations (in person):	Week of November 27 th , 2017
Notification of Selected Artist:	Week of December 4 th , 2017
Authorization to Proceed:	Issued week of January 8 th , 2018
Completion of Project:	May 25 th , 2018 (artwork completed and installed) it is anticipated that the artists shall provide periodic updates as to the progress of the design and fabrication of the art. Artist will have access to the building between May 14 th and May 25 th to install the art work.

(All dates except the completion date are subject to change)

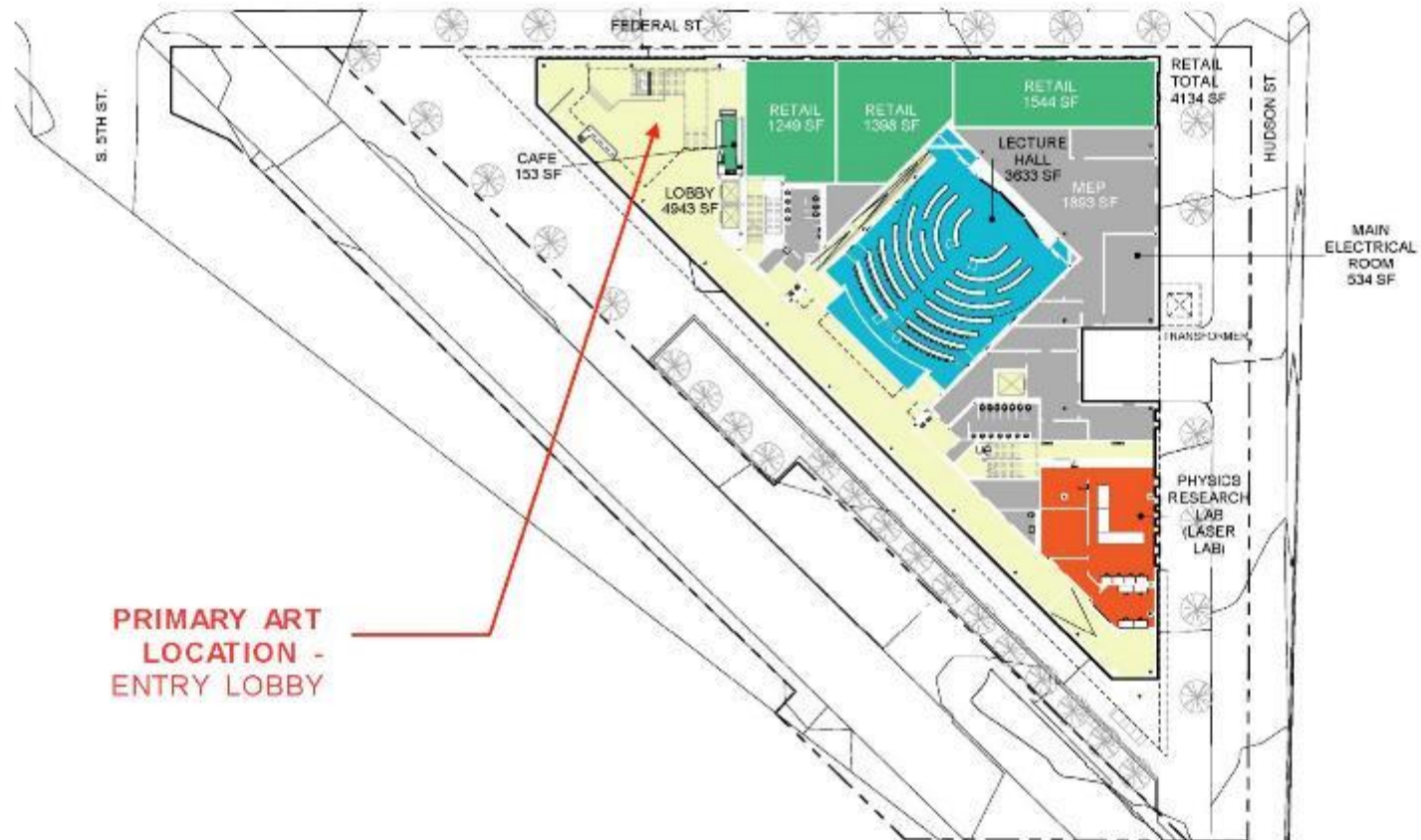
ART INSTALLATION | BUILDING SECTION

SECONDARY ART LOCATION – UPPER ATRIUM

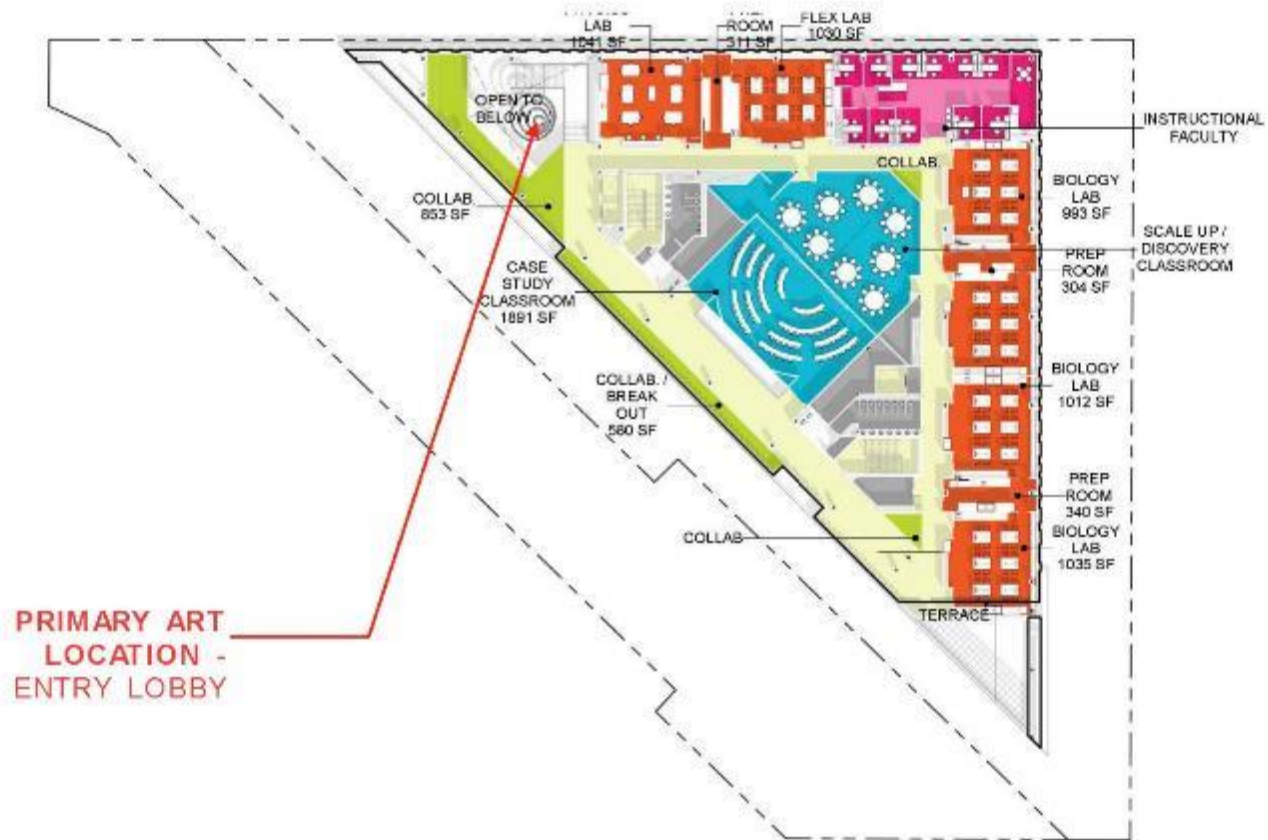
PRIMARY ART LOCATION – ENTRY LOBBY



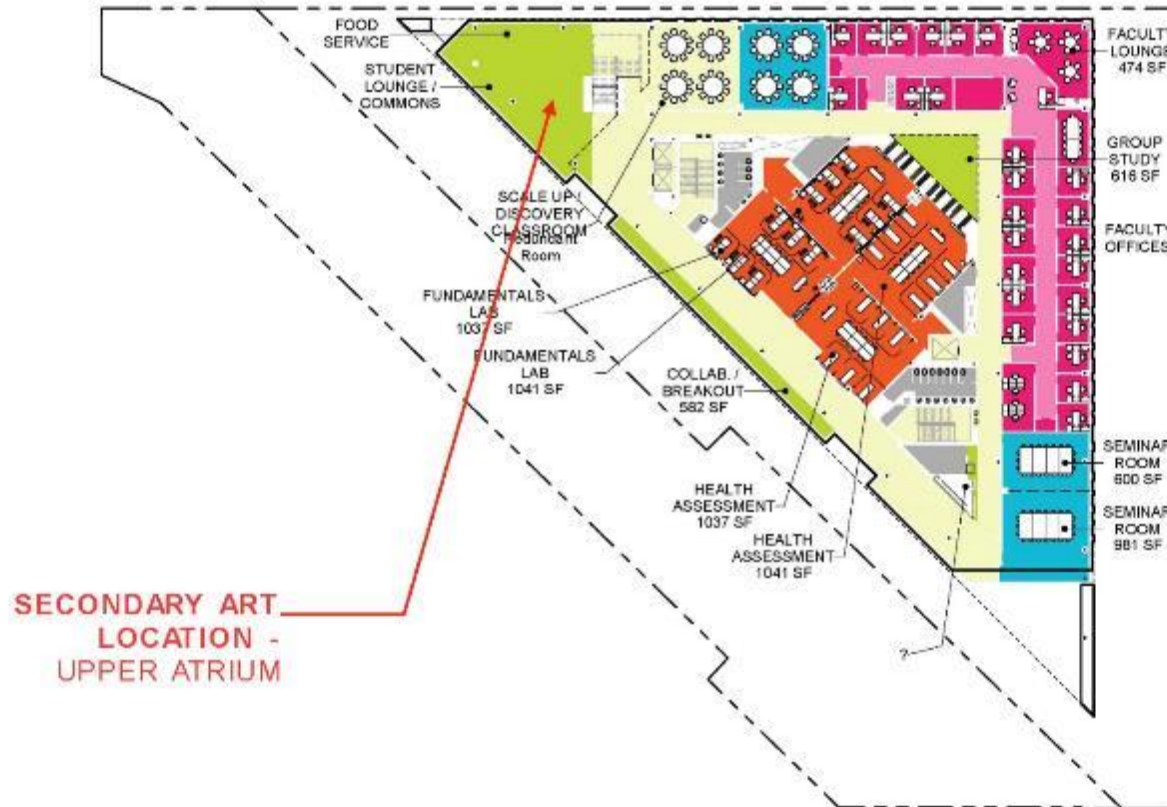
PLANS | FIRST FLOOR



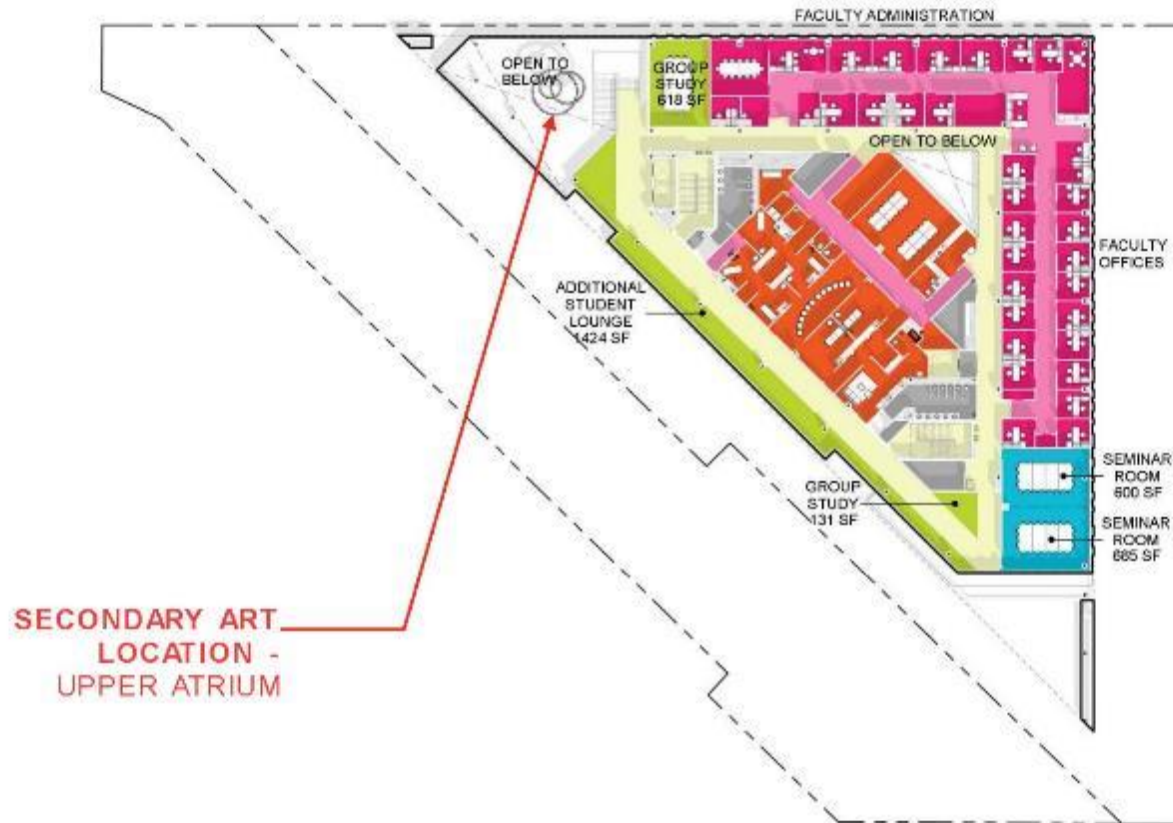
PLANS | SECOND FLOOR



PLANS | THIRD FLOOR



PLANS | FOURTH FLOOR



INTERIOR VIEWS | ENTRY LOBBY



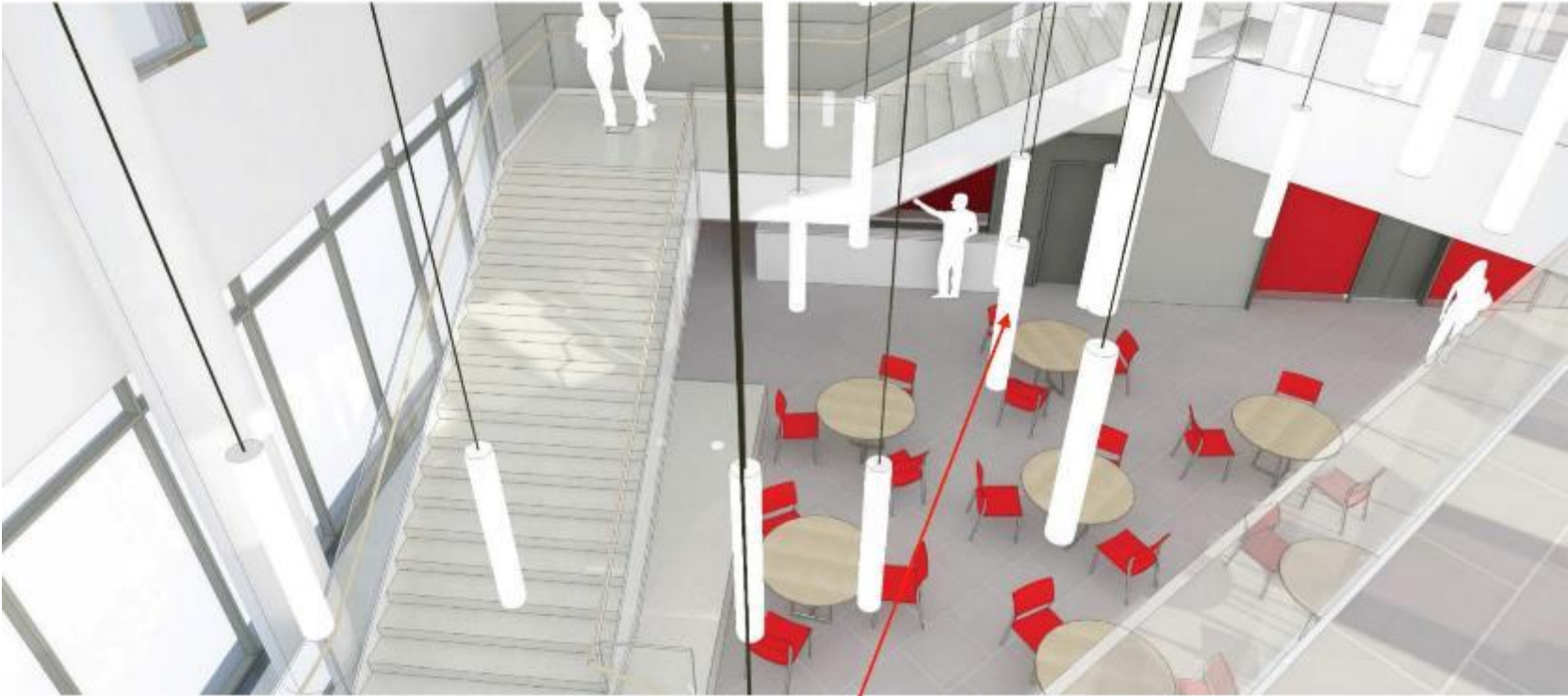
**PRIMARY ART LOCATION -
ENTRY LOBBY**

INTERIOR VIEWS | ENTRY LOBBY



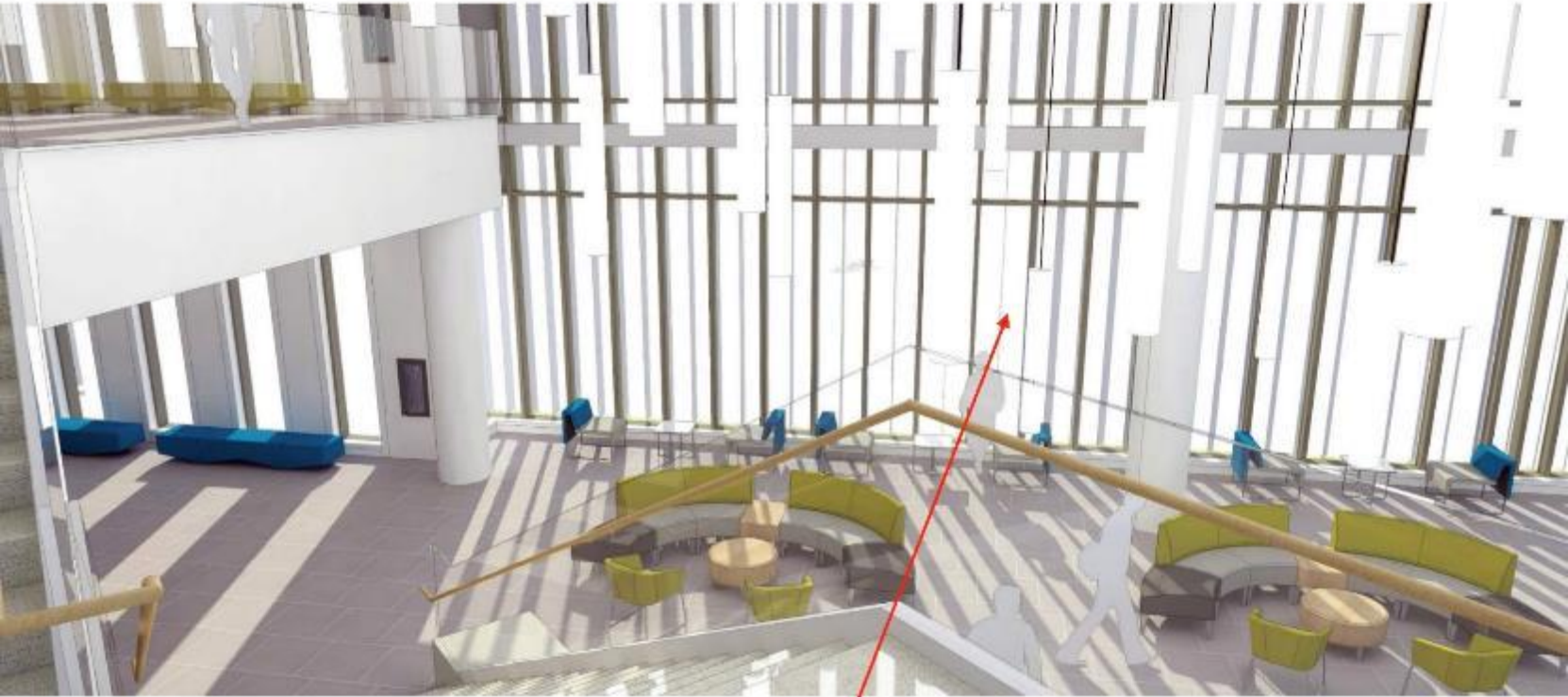
PRIMARY ART LOCATION -
ENTRY LOBBY

INTERIOR VIEWS | ENTRY LOBBY



**PRIMARY ART LOCATION -
ENTRY LOBBY**

INTERIOR VIEWS | UPPER ATRIUM



**SECONDARY ART LOCATION –
UPPER ATRIUM**

INTERIOR VIEWS | UPPER ATRIUM



**SECONDARY ART LOCATION –
UPPER ATRIUM**